

CLINICAL STUDY

Optimization of Eva Green real-time mPCR for differentiating *C. jejuni/coli* directly from feces

Pavlova M¹, Velev V², Dobрева E¹, Asseva G¹, Ivanov I¹, Petrov P¹, Mangarov A², Tomova I², Kantardjiev T¹

National Centre of Infectious and Parasitic Diseases, Sofia, Bulgaria. velev_md@abv.bg

ABSTRACT

OBJECTIVE: To develop and optimize a rapid molecular method for diagnosing campylobacteriosis directly from a clinical fecal sample and at the same time for determining the most common causing agents – *C. jejuni/coli*.

MATERIALS AND METHODS: 38 clinical fecal samples from hospitalized patients with diarrheal syndrome were tested using a rapid immunochromatographic test. All positive samples were tested for confirmation by culturing in a microaerophilic atmosphere. The Eva Green real-time mPCR reaction of a direct fecal sample was conducted using the “IQ5TM Real-Time PCR System” apparatus.

RESULTS: Out of 38 clinical fecal samples which were ICT positive, 18 strains were isolated by culture, namely, 17 of *C. jejuni* and 1 of *C. coli*. The Eva Green real-time mPCR reaction also reported 18 positive samples for *Campylobacter*, out of which 17 were of *C. jejuni* and only one of *C. coli*.

CONCLUSION: We developed and optimized the Eva Green real-time mPCR for the detection and species differentiation of *C. jejuni/coli* directly from a clinical fecal sample. The molecular analysis we described has a 100% sensitivity and specificity when comparing the results obtained by it to those of the culture method, which is currently the “gold standard” in the diagnosis of campylobacteriosis (Tab. 2, Fig. 1, Ref. 6). Text in PDF www.elis.sk.

KEY WORDS: *Campylobacter*, diarrhea, mPCR.

Introduction

Enteropathogenic bacteria are the cause of acute infectious diarrhea, which is a global health problem (3–6). In our country, routine tests for *Campylobacter* spp. are not yet performed on diarrheal patients, and if done, it is by using traditional culture methods, which are slow, laborious and capricious. Very rarely the microbiological laboratories in Bulgaria perform species characteristics of the most common strains of *C. jejuni* and *C. coli*, thus making epidemiological studies on campylobacteriosis difficult (1, 4).

Materials and methods

For the period of August 2016 – October 2016, 38 clinical fecal samples of hospitalized patients aged between 0 and 7 years and suffering from diarrheal syndrome at the Hospital for Infectious Diseases, Sofia were tested. The clinical samples were tested using a rapid immunochromatographic test (ICT) (*CerTest Biotec*) for the *Campylobacter* antigen. All positive samples were tested for confirmation using culturing. The cultures were

grown in a microaerophilic atmosphere generated by a gas pack in an anaerobic jar (Oxoid USA) at 42–43 °C for 24–72 hours. The isolates were biochemically differentiated by a positive reaction of sodium hippurate hydrolysis and/or positive reaction of indoxyl acetate hydrolysis for *C. jejuni* and positive reaction of indoxyl acetate hydrolysis, and negative reaction of sodium hippurate hydrolysis for *C. coli*.

DNA extraction. Bacterial DNA from the clinical fecal samples was extracted using a ready-for-use kit QUIampDNABlood-MiniKit (QUIAGEN, Germany) in accordance with the manufacturer’s instructions (*Eva Green real-time multiplex PCR*). The approved PCR method for simultaneous detection and differentiation of *C. jejuni/coli* directly from a fecal sample is based on three pairs of primers, which until now were not included together in a common PCR reaction: primers – **AB F2/R2**, amplifying a specific region of the *cj041* gene for *C. jejuni*, **ceuE F/R**, amplifying a specific region of the *ceuE* gene for *C. Coli*, and primers pair **camp F2/R2**, amplifying a specific region of the genus gene for *Campylobacter* spp. The primers used and their sequences are provided in Table 1. Two reference strains are also included, namely 33559ATCC for *C. coli* and 335560 of *C. jejuni*, used as positive controls and ddH₂O used as a negative control (Tab. 1).

The Eva Green real-time mPCR analysis is optimized to be conducted in a final reaction volume of 25 µl at the specified primers and conditions 1 x Taq DNA Polymerase buffer; 2.5 x DMSO; 0.2 mM dNTP; 0.03/µl HS Taq DNA Polymerase (Appli-

¹National Centre of Infectious and Parasitic Diseases, Sofia, Bulgaria, and ²Department of Infectious Diseases, Parasitology and Tropical Medicine, Medical University of Sofia, Bulgaria

Address for correspondence: V. Velev, MD, Medical University of Sofia, Bulv. “G. Sofiiski” 1, Sofia, Bulgaria.

Tab. 1. Sequence of the primers used and the size of their amplicons.

Gene	Sequence	Amplicon
16S rDNA	CACGTGCTACAATGGCATAT GGC+TTCATGCTCTCGAGTT	108 bp
<i>ceuE</i> - F	CAAGTACTGCAATAAAAACTAGCACTACG	72 bp
<i>ceuE</i> - R	AGCTATCACCTCATCACTATACTAATAG	
<i>cj041</i> - F	GATACCTTAAAGTGCAGCCTGTGA	74 bp
<i>cj041</i> - R	ACGCCTAAACCTATAGCTCCTTC	

chem GmbH, Germany); 0,005µ Mcamp – F2/R2; 0.55 µ MceuE – F/R; 0.4 µ MAB – F/R.

The Eva Green real-time mPCR reaction takes place in an “IQ5TM Real-Time PCR System” under the following conditions: the first step is denaturation for 10 min. at 95 °C, followed by 29 cycles, each consisting of 15 sec. of denaturation at 90 °C, 20 sec. of 58 °C hybridization and 25 sec. of 60 °C elongation; while the latter final step of elongation lasted 5 min. at 72 °C. The resulting amplicons measure 108 bp, 72 bp and 74 bp in size, while these DNA fragments correspond to the camp genes for *Campylobacter* spp., *CeuE* for *C. coli* and *cj0414* for *C. jejuni*.

Determining the analytical sensitivity and specificity of the Eva Green real-time mPCR method

For determining the analytical specificity, a group of commonly isolated gastroenteritis-causing bacteria was selected, particularly *Y. enterocolitica*, *E. coli stx1d*, *E. coli O104*, *Sh. flexneri*, *S. Typhi*, *Cl. difficile* and *S. aureus* toxC. The strains ATCC 33560 and C-14.2 were used as a positive control for *C. jejuni* and *C. coli*, respectively. A 10x DNA of the cultures of the respective strains was used.

For determining the analytical sensitivity, a series of dilutions of a tenfold bacterial suspension of *C. jejuni* and *C. coli* in saline was used. Volumes of 10 µl of each dilution were used to artificially inoculate feces which were negative for campylobacter. The QUIampDNABloodMiniKit was used for DNA extraction.

Results and discussion

All fecal samples were tested for *C. jejuni/coli* using three separate methods: ICT, culture method and using the Eva Green real-time mPCR. The results obtained are provided in Table 2.

A rapid immunochromatographic test (ICT) for the *Campylobacter* antigen has been performed on clinical samples of patients with diarrheal syndrome aged between 0 and 7 years and hospitalized at the Hospital for Infectious Diseases, Sofia, and all positive

Tab. 2. Positive results of the three laboratory methods used to diagnose campylobacteriosis.

ICT (+)	Culture method (+)	mPCR (+)
37	18	18
	<i>C. jejuni</i> – 17	<i>C. jejuni</i> – 17
	<i>C. coli</i> – 1	<i>C. coli</i> – 1

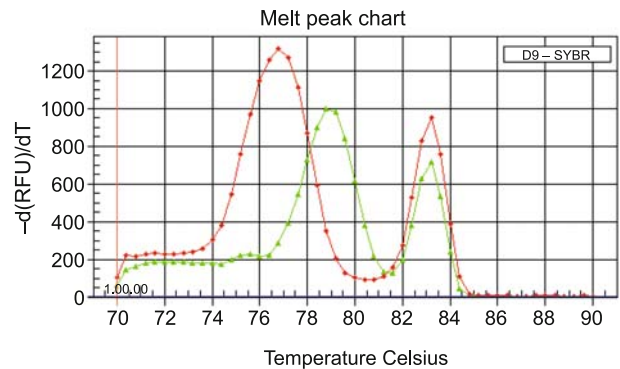


Fig. 1. Analysis of the peaks of amplification after a Real-time mPCR at T_a = 58 °C. *C. jejuni* (AB = 78.8 °C), *C. coli* (*ceuE* = 76.8 °C).

samples have been verified with a culture and molecular test at the Centre for Infectious and Parasitic Diseases, Sofia.

Out of 38 fecal samples which were ICT positive, 18 strains were isolated in a culture; 17 of *C. jejuni* and 1 of *C. coli*. This analysis provides a rapid and more reliable detection of bacterial cells compared to the conventional culture methods using biochemical differentiation. The amplification curves of the products can be monitored in real time, and the melting temperatures typical of the target genes are respectively: 78.80 °C for *C. jejuni*, 76.80 °C for *C. coli* and 82.80 °C for *Campylobacter* spp. at the optimal melting temperature of the primers (T_a) of 58 °C, based on which we optimized the protocol (Fig. 1).

Out of 38 clinical samples tested for *C. jejuni/coli*, the PCR analysis reported 18 positive samples for *Campylobacter* while in 17 of them the PCR products had the typical melting temperatures for *C. jejuni* and only one for *C. coli*. All other samples were negative for *Campylobacter* spp.

Determining the analytical sensitivity of the Eva Green real-time mPCR method.

In each PCR reaction for analytical sensitivity we used 7.5 µl of concentrated DNA extracted from artificially inoculated feces with serial dilutions of 10 µl of a tenfold bacterial suspension. The analytical sensitivity of the test is approximately 103 CFU per 150 µl of liquid stool. This analytical sensitivity is significantly higher than any published to date (2).

The molecular analysis we described has a 100% sensitivity and specificity when comparing the results obtained by it to those of the culture method, which is currently the “gold standard” in the diagnosis of campylobacteriosis. In this study, the PCR method is inferior to ICT only in terms of speed.

Conclusion

The fecal samples of patients with acute enterocolitis may contain a variety of pathogenic bacteria. For the purposes of early initiation of etiological treatment, the rapid detection of the bacterial agent causing the particular disease and providing a timely

diagnosis are important. We developed the Eva Green real-time mPCR analysis as a rapid, sensitive and specific method for the diagnosis of campylobacteriosis directly from a clinical fecal sample and at the same time determined the two most frequently isolated species – *C. jejuni* and *C. coli* for the needs of molecular epidemiology. This method will be very useful in emergency situations such as in controlling epidemic situations, pediatric infectology, as well as in immunosuppressed patients.

Reference

1. **Boyanova L, Gergova G, Spassova Z et al.** *Campylobacter* infection in 682 bulgarian patients with acute enterocolitis, inflammatory bowel disease, and other chronic intestinal diseases. *Diagn Microbiol Infect Dis* 2004 49 (1): 71–74.
2. **Center of Disease Control.** 2008. *Campylobacter*. http://www.cdc.gov/nezved/disease_listing/Campylobacter_gi.html.
3. **Daskalov H, Maramski A.** Prevalence and factors affecting the presence of *Campylobacter* spp. in broiler carcasses in Bulgaria. *Turk J Vet Anim Sci* 2012; 36 (5): 539–545.
4. **Stoicheva M, Velcheva R, Murdjeva M et al.** Intestinal infections in children under 5 years, *Medicart* 3; 10: 23–26.
5. **Sahin O, Kassem H, Shen Z et al.** *Campylobacter* in Poultry: Ecology and Potential Interventions. *Avian Dis* 2015; 59 (2): 185–200.
6. **World Health Organization, 2008,** *Campylobacter* Fact Sheet #255, <http://www.who.int/mediacentre/factsheets/fs255/en/>

Received May 4, 2017.
Accepted May 22, 2017.